

## 16. ORBI-BIKE MT.GYM-016



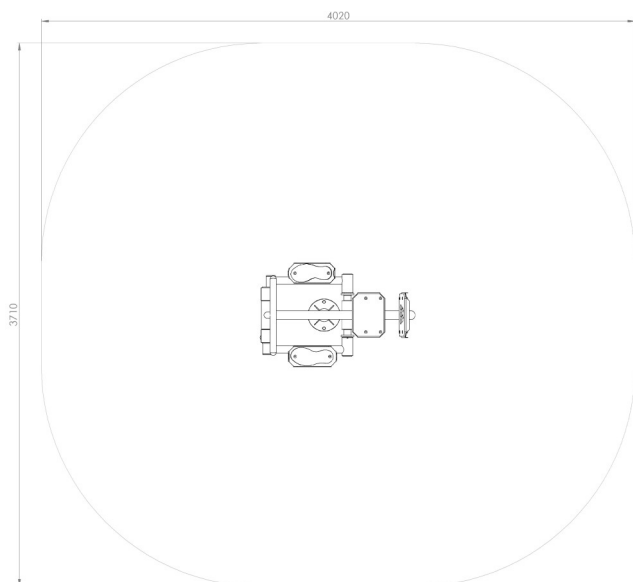
Dimensions:	1330mm x 1020mm x 710mm
Minimum space:	4,02m x 3,71m
Safety surface area:	13m <sup>2</sup>
Free height of fall:	1m
Installation surface:	concrete, stone, sand, turf
Foundation depth:	300mm
Spare parts:	available at the manufacturer
Age range:	no limits (growth restrictions)
Certificate of conformity with the safety standards:	PN-EN 16630

### Instructions:

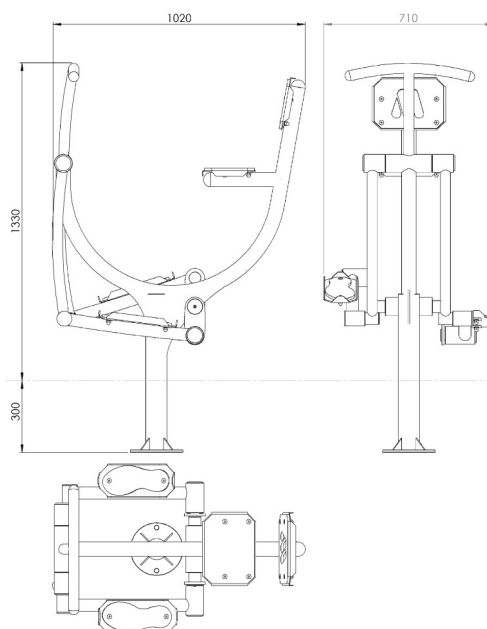
Sit on the seat, grasp the handles with both hands and start pedaling as if you were riding a bike.

### Material and design specifications:

Seat, backrest and treads made of aluminium, covered with polyethylene ABS board. Handles made of powder coated steel tube. Supporting pole made of steel tube ended at the bottom with mounting flange. Seat and tread frame made of powder coated metal sheet. Movable connections made with the use of rolling bearings. Installation with the use of stainless steel screws. Holes sealed at the endings with steel elements. Installed permanently in the ground.



Safety surface: 13m<sup>2</sup>  
Minimum space: 4,02m x 3,71m



Dimensions: 1330mm x 1020mm x 710mm